

# FM constant impedance combiners

## TYPES

2PX2-B5K0-1

3PX2-B5K0-1

4PX2-B5K0-1

2PX2-B12K-1

3PX2-B12K-1

4PX2-B12K-1

5PX2-B18K-1

2PX2-B18K-1

3PX2-B30K-1

4PX2-B60K-1

2PX2-B30K-1

2PX2-B60K-1

3PX2-B60K-1

4PX2-B80K-1

Constant impedance combiners, also known as constant impedance filters (CIF), are available in a power range from 600 W to 30 kW per input, and available with 2 - 10 inputs.

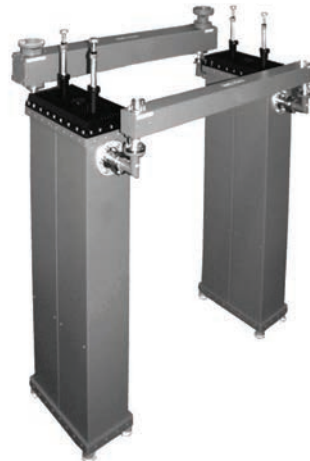
Minimum frequency spacing is 800 kHz, which adheres to strict technical specification.

All combiners are factory tuned to specified frequencies. Retuning is easily performed after installation.

Combination of CIF and starpoint combiners offer cost-efficient solutions to the customer.



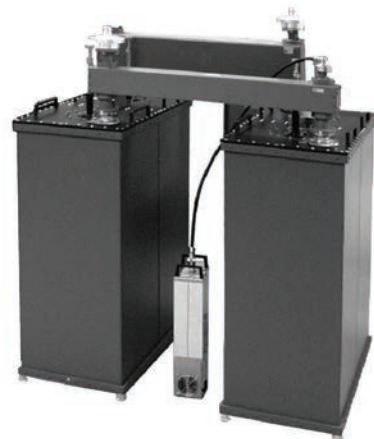
2PX2-B5K0-1



2PX2-B12K-1



2PX2-B18K-1



2PX2-B30K-1

	2PX2-B5K0-1	3PX2-B5K0-1	4PX2-B5K0-1	2PX2-B12K-1	3PX2-B12K-1	4PX2-B12K-1	5PX2-B18K-1
Frequency range	87,5 - 108 MHz						
Impedance	50 Ω						
Return loss (narrowband)	> 30 dB						
Return loss (broadband)	> 25 dB min. > 28 dB typ.						
* Isolation (between the inputs)	> 30 dB						
* Max. power per NB input	600 W			3 kW			
Max. output power	5 kW	5 kW	5 kW	12 kW	12 kW	12 kW	18 kW
3 dB band-width	600 kHz (can be tuned)						
* Insertion loss (narrowband)	< 0,9 dB	< 1,0 dB	< 1,0 dB	< 0,5 dB	< 0,55 dB	< 0,6 dB	< 0,7 dB
* Insertion loss (broadband)	< 0,15 dB	< 0,2 dB	< 0,25 dB	< 0,15 dB	< 0,15 dB	< 0,2 dB	< 0,2 dB
Min. frequency spacing	800 kHz						
Material	aluminium, brass, silver plated						
Operating temperature	- 5 °C to + 55 °C						
RF connector	N, DIN 7/16 or EIA 7/8"			DIN 7/16 or EIA 7/8"			
- input	DIN 7/16 or EIA 7/8"			EIA 7/8" or EIA 1 5/8"			
- output	DIN 7/16 or EIA 7/8"			EIA 7/8" or EIA 1 5/8"			
Dimension (mm)	450 x 900 x 1.350 max.	450 x 1.900 x 1.350 max.	450 x 2.900 x 1.350 max.	650 x 1.050 x 1.350 max.	650 x 2.050 x 1.350 max.	650 x 3.050 x 1.350 max.	650 x 4.200 x 1.350 max.
Weight	41 kg	83 kg	125 kg	56 kg	113 kg	170 kg	230 kg

\* Parameter values correspond to the minimum frequency spacing between the channels of the combiner

	2PX2-B18K-1	3PX2-B30K-1	4PX2-B60K-1	2PX2-B30K-1 2PX2-B60K-1	3PX2-B60K-1	4PX2-B80K-1
Frequency range	87,5 - 108 MHz					
Impedance	50 Ω					
Return loss (narrowband)	> 30 dB					
Return loss (broadband)	> 25 dB min. > 28 dB typ.					
* Isolation (between the inputs)	> 30 dB					
* Max. power per NB input	8 kW			12 kW (MPX2-B30K) or 30 kW (2PX2-B60K)		
Max. output power	18 kW	30 kW	60 kW	30 kW 60 kW	60 kW	80 kW
3dB band-width	600 kHz (can be tuned)					
* Insertion loss (narrowband)	< 0,3 dB	< 0,35 dB	< 0,35 dB	< 0,2 dB	< 0,25 dB	< 0,25 dB
* Insertion loss (broadband)	< 0,15 dB	< 0,15 dB	< 0,2 dB	< 0,1 dB	< 0,1 dB	< 0,15 dB
Min. frequency spacing	800 kHz					
Material	aluminium, brass, silver plated					
Operating temperature	- 5 °C to + 55 °C					
RF connector	EIA 7/8" or EIA 1 5/8"			EIA 1 5/8" or EIA 3 1/8" (2PX2-B60K-1)		
- input	EIA 1 5/8" or EIA 3 1/8"			EIA 3 1/8" or EIA 4 1/2" (2PX2-B60K-1)		
- output	EIA 1 5/8" or EIA 3 1/8"			EIA 3 1/8" or EIA 4 1/2" (2PX2-B60K-1)		
Dimension (mm)	600 x 1.000 x 1.350 max.	600 x 2.000 x 1.350 max.	600 x 3.000 x 1.350 max.	850 x 1.000 x 1.350 max.	850 x 2.200 x 1.350 max.	850 x 3.400 x 1.350 max.
Weight	95 kg	195 kg	295 kg	195 kg 350 kg	400 kg	610 kg

\* Parameter values correspond to the minimum frequency spacing between the channels of the combiner

